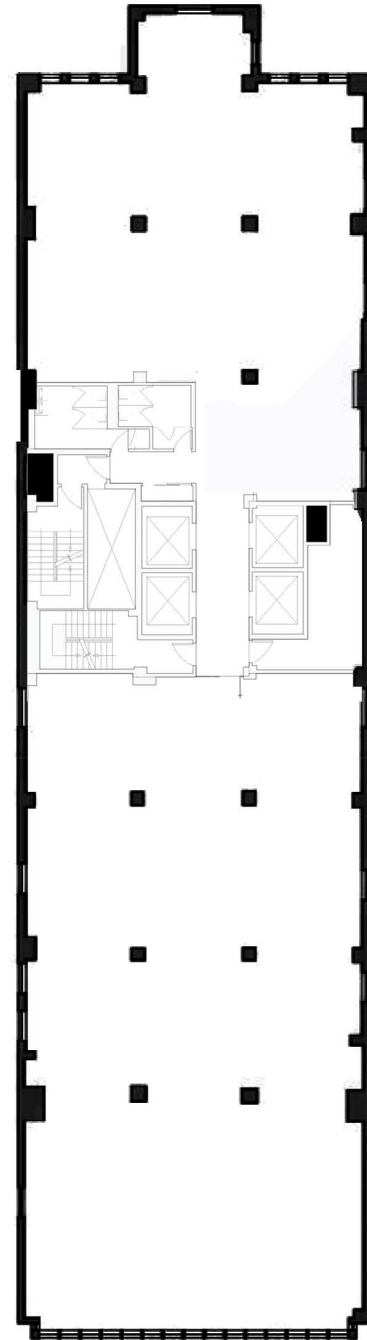


TYPICAL BASE FLOOR

44TH STREET

CORE & SHELL
10,700 - 11,900 RSF



43TH STREET

OWNER: A STRATEGIC PARTNERSHIP OF:

EXCLUSIVE LEASING
& MANAGEMENT AGENT:



John D. Ryan, III
212.729.4971
john.ryan@avisonyoung.com

Anthony Lopresti
212.729.3901
anthony.lopresti@avisonyoung.com

Henry Fuentes
212.729.4560
henry.fuentes@avisonyoung.com